

Operating instructions interface for CTS-32 C (V1.0.0.1)

WIN-98, WIN-ME, WIN-2000, WIN-XP, VISTA

1 Software installation

Please don't connect the tuning set during the installation process.

Start **Setup-CTS-32-C.exe** from the attached CD or from Internet "www.tuning-set.de" and follow the instructions.



Advice: the software for CTS-7 and CTS-32-L is not suitable for CTS-32-C.

2 Change COM Port number

To change the COM port number you must connect the tuning set to USB port on your PC.

Then click via the start menu

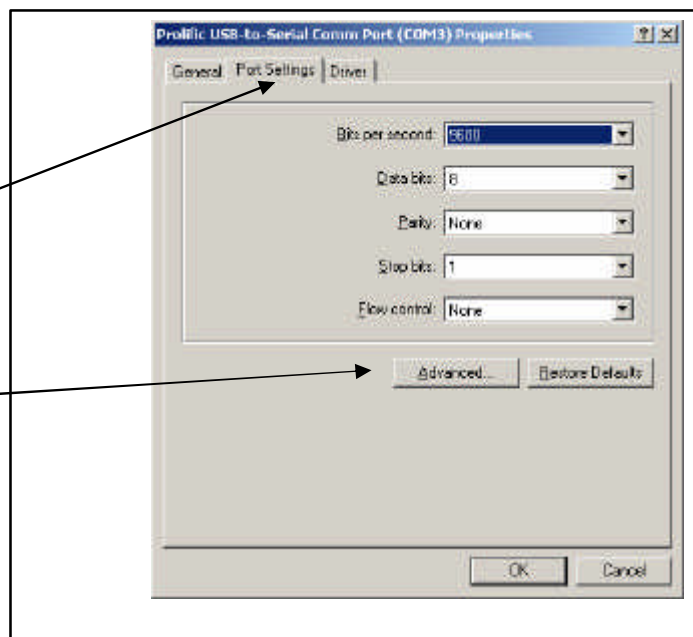
Systemcontrol\
System\
Hardware\
Device Manager\
Devices by connection \
ports (COM & LPT).



Doubly click on "USB-Serial Port (COM...)" and go to 'properties'.

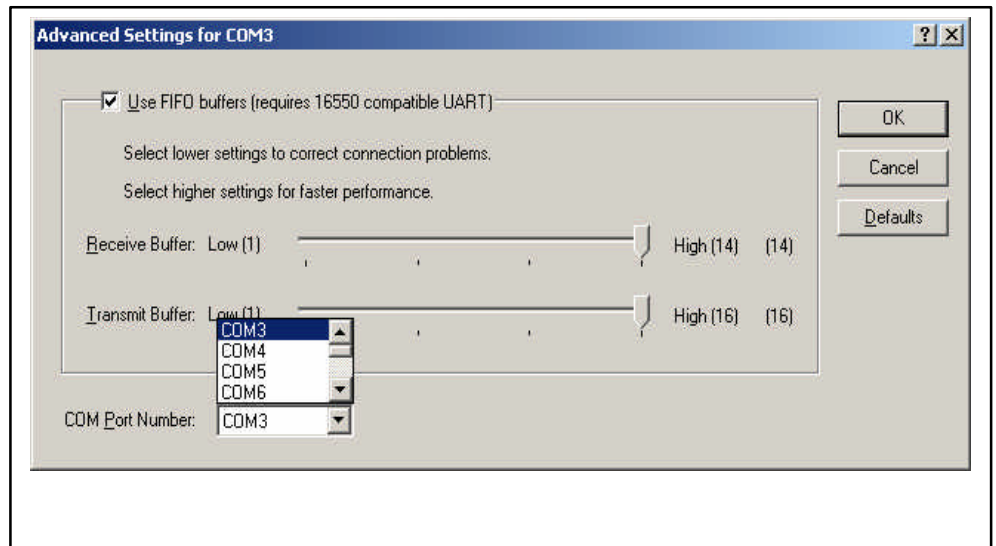
Then choose "Port Settings",

and then click on "Advanced".



Select a free COM Port number between 1 and 16, and click on " **ok**".

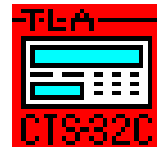
Remember this number well, because it's needed later for the adjustment of the interface program.



3 How to start the interface program

Connect the tuning set to USB port on your PC and turn it on.

Doubly click this Icon on the desctop, to start the interface program.

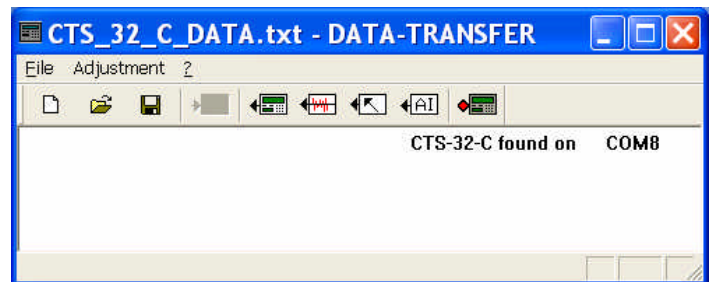


This window will appear:

If you are using this program for the first time, you must select the same COM port as you have already selected in the device manager, with "Adjustment & Interface".

A few seconds after the device has synchronized, you will in see the following window the indication:

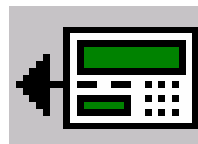
"CTS 32 C found on COM<Portnummer> "



4 Data transfer from tuning set to PC.

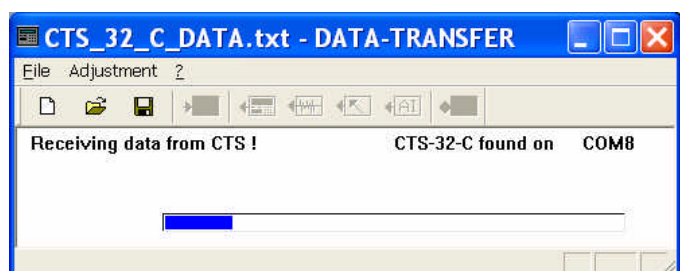
4.1 Transmission of all tuning set data

For this purpose, please click on this button:



This window will appear:

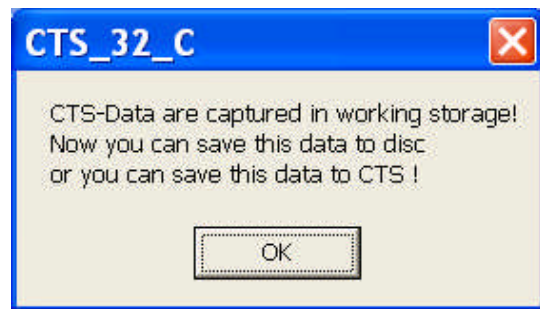
On the tuning set is displayed, which memory currently is being transferred.



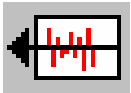
After successful data transmission, you'll see the following indication:

The data of the tuning set are now captured in the working storage of the PC.

These data, you can save to mass storage, as usual in other windows applications.



4.2 Other buttons for data transfer from tuning set to PC



Only the historical temperaments will be transferred.



Only the data for the device settings will be transferred.




Only the data of the active instrument program will be transferred.

The sequence of data transfer is the same as already described in chapter 4.1.

5 Data transfer from PC to tuning set

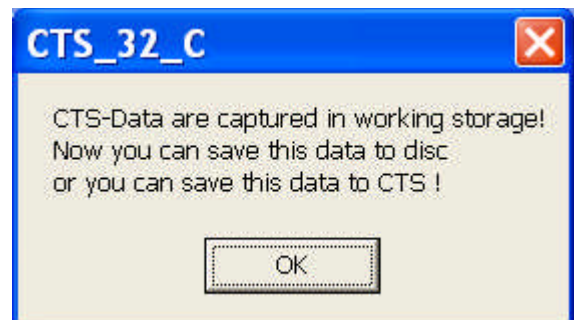
Start interface program as already described in chapter 3

Open with "File  Open" an already existing CTS-32-C data file. For example:

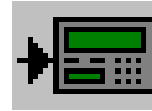
CTS_32_C_DATA.TXT.

Following window will appear. Click "OK".

The data are now captured in the PC's working storage.



Clicking this icon starts the data transfer from PC to tuning set.

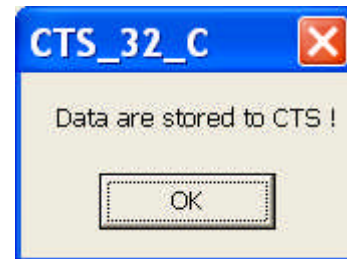


Attention !!! The memory of the tuning set will be overwritten.

If the data contains only a subset of the complete data, the rest of the data will be preserved in the tuning set.

The process of data transfer is indicated on the tuning set.

After successful data transmission, you'll see the following indication:



6 How to edit CTS-32-C data

The Tuning Set CTS-32-C - files are pure text files. You can change it with every editor ("notepad.exe" for example).

Editing the file, you have to ensure, that it's structure will be maintained. The lengths of the lines must necessarily remain the same. It's only allowed to overwrite numerical values (cent values for example).

After editing, you have to save your file as a pure text file; without any formatting data.

After that, you may your file store back into the tuning set (See chapter 5).